



W.I.S.E. Summer Newsletter - May 2018

[View this email in your browser](#)

In this Issue:



[W.I.S.E. Summit Update](#)
[Leadership Team Report](#)
[New Members](#)
[View W.I.S.E. Members](#)
[Local Gatherings](#)
[Letter from the Editor](#)

IGNITE 
WISE SUMMIT 2018

Don't Wait . . . Book Your Room TODAY!

When: Sept 24-26, 2018

Where: [Chateau Elan Winery & Resort \(Braselton, GA\)](#)
Registration & Hotel Info: www.chateauelan.com/isa.

Registration for the W.I.S.E. Summit 2018 will be launching soon but the word has already started spreading about the event. **Book your room** before spaces fill and join us in September as we **IGNITE** our networking and growth potential!

Report from the Leadership Team

The Leadership Team continues to grow and expand our influence in support of mission, vision and goals.

[Download our W.I.S.E. Vision](#)



From left to right: Gail Ludewig, Communication; Kathleen Durbin, Advisory; Jill Raper-Marshman, Networking; Cathy Pendrick, Chair; Molly Langdon, Engagement; Lori Mata, Membership; Sandy Johns, Strategic Initiatives; Brendan Breen, ISA Support. **Missing:** Marisol Fernandez, Education & Development

Thank you for expanding our community with your networking and recommendations for candidates. Our membership has grown rapidly during 2018 and we welcome further referrals.

W.I.S.E. Recruitment

W.I.S.E. candidates are experienced professional leaders dedicated to learning and supporting other women. W.I.S.E. offers opportunities to network with women focused on professional development. W.I.S.E. members must be employed by an ISA member company. If their company is not a member, ISA can reach out to see if their company is interested in joining.

If anyone has questions about membership, I would be happy to talk with potential candidates about membership criteria and next steps.



Lori Mata
Membership Chair
lori.a.mata@saint-gobain.com

It was a pleasure seeing everyone at our [ISA Convention W.I.S.E. Network Reception](#).

Meet New Members

Welcome to our newest members. **Connect** on [LinkedIn](#) to expand our community.



Lindsay Konzak
President and Founder
3 Aspens Media

Lindsay's experience spans media and journalism. She joined W.I.S.E. to deepen industry involvement.



Tanya Scarborough
Corporate Sales Development Mgr
Logistics Supply

Tanya believes W.I.S.E. is one of the few avenues that showcase women making a difference.



Michelle Huley
National Account Rep
Berkshire eSupply

With a background in eCommerce, marketing & sales; Michelle joined to gain knowledge from like-minded, strong women and to help other women grow, as well.



Dorothy Depies
Customer Service Manager
Replenex

Having worked in the manufacturing industry for the majority of her career, Dorothy joined W.I.S.E. to network and learn with industry peers.



Nicole Neumann
Vice President of Human Resources
Vallen

She joined W.I.S.E. at the invitation of Joyce Lansdale as a way to network and learn more about industrial distribution from talented women.



Anita Greenland
Vice President of Sales
The Brooks Group

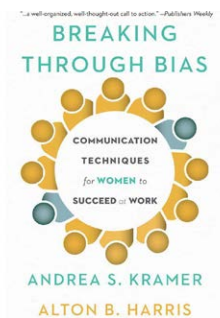
Anita is a former competitive athlete. She joined W.I.S.E. to network and use her talents to contribute to the growth of this all-woman organization.

View W.I.S.E. Members

Want to get to know our network? Browse the W.I.S.E. Membership List, accessible via login on the ISA website:

www.isapartners.org/wise-membership-list

Local Gatherings - Upcoming



W.I.S.E Book Club Kickoff

[Kate Bean](#) will be facilitating our first call to discuss parts 1 and 2 on June 11th. Our first book is **Breaking Through Bias** by Andrea S. Kramer and Alton B. Harris. This highly practical book makes clear that women don't need to change who they are to succeed in their chosen careers, and they certainly don't need to act more like men. Learn more on our [LinkedIn page](#) and [purchase the book today from Amazon](#)

IMTS - Sept 2018 - Chicago, IL

The W.I.S.E. group will be coordinating a happy hour event during IMTS later this year. More information will be sent shortly.



Local Gatherings - Past



W.I.S.E. Network Reception at ISA

It was a pleasure seeing everyone at our networking reception at the ISA Convention in Baltimore, MD on April 15, 2018. [Read more about the event!](#) Watch the [ISA Convention wrap-up video](#) and look out for more W.I.S.E. networking opportunities at future events.

W.I.S.E. Participates in *Race for the Cure*



More than thirty W.I.S.E. members and friends met in Indianapolis, IN on April 28 and participated in the [Susan G. Komen Race for the Cure](#). The day was full of encouragement for all impacted by breast cancer as we support its prevention and cure. Char Cooper, one of our members and current survivor, stated, "What an absolute delight it was to walk the Komen Breast Cancer Walk with this amazing and incredible group of ladies! While the temps were cool, the love and friendship among ALL of us was as

warm as could be!"

W.I.S.E. was the second highest corporate team, having raised \$4000. It was wonderful to see our support for a great cause and for each other. Our bonds are strong. Thanks to our team captain [Heather Eisenhauer](#) for coordinating this great event and to the team at [Quality Mill Supply](#) for donating the W.I.S.E. team shirts! [Watch the video and read about this on the ISA Website . . .](#)



Good Times in Indy

During the Komen Race weekend, W.I.S.E. members gathered before and after the event for friendship and laughs. Thanks to [Jill Raper-Marshman](#) for opening up her house and for organizing the Duckpin Bowling.

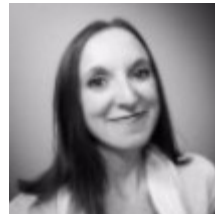
[View photos on our W.I.S.E. FaceBook page.](#)

Invest in Others and Yourself

The essence of our W.I.S.E. community is to embrace and enhance each other. I was reminded of our group's vision when listening to [Musimbi Kanyoro's Ted Talk which she gave at TEDWomen 2017.](#)

The power of mutual respect, mutual generosity and mutual responsibility elevates our mutual achievements. W.I.S.E. ignites this philosophy among us so that we can each expand, grow and continue to ignite the passion in others.

Letter from the Editor



Miriam Metcalfe
Editor-in-Chief
miriam.metcalfe@dormerpramet.com

Our mailing address is:

Women Industrial Supply Executives

100 North 20th Street Suite 400

Philadelphia, PA 19103

[unsubscribe from this list](#) [update subscription preferences](#)